



sistemi di
automazione
computerizzati



PC INDUSTRIALE SIDAC TOUCH 12.1 pollici



SIDAC CNC srl Sede legale Via Acquedotto 111 – 21017 Samarate (VA)

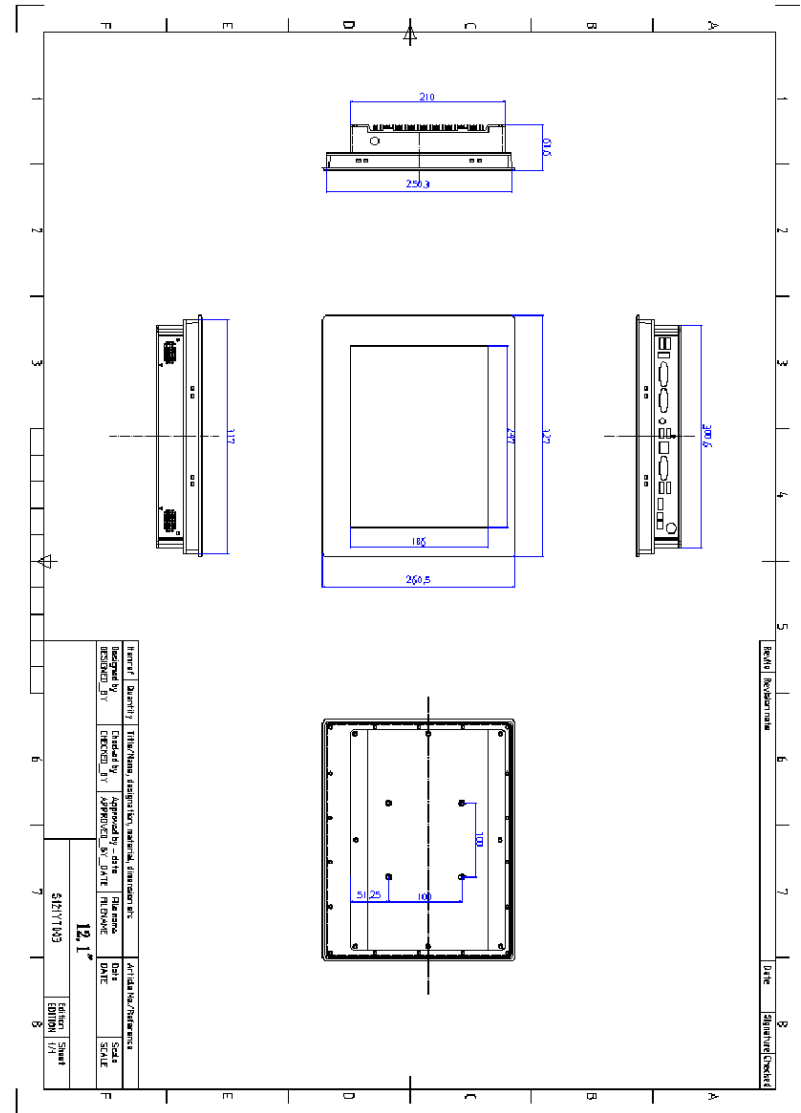
pIVA CF 02393200023 Rea VA-319715 Cap. sociale 110.000 Euro i.v.

Iscritta al Reg. Imprese di Varese n. 02393200023

tel 0331 223019 fax 0331 223078 www.sidaccnc.it info@sidaccnc.it



MECHANICA DRAWINGS





TECHNICAL FEATURES

Touch Screen	10 points Capacitive touch screen. 5-wire Resistive Touch Panel (USB)
Speakers	Connection possibility for external loudspeaker
Camera	USB port
Power Adapter	DC 24V , 2A
Operating Temp.	-10°C - 50 °C (optional -20°C-60°C)
Storage Temp.	-20 - 70 °C
Shell Material	Front: Aluminum Back: Aluminum & Steel (Q235)
Color	Black
IP	Front: IP65 (optional)
Dimensions	327x261X76.6mm
Mounting	VESA 100X100mm; Embedded Mounting (optional) 316X250mm
Guarantee	12 month

SOMMARIO

Features.....pag. 4
 Description.....pag. 5
 Technical features.....pag 7
 Mechanical Drawings.....pag 9

FEATURES

12.1 inch; 1024X768 resolution; Fan less; Industrial 5-wire resistive touch screen; High brightness; Front shell IP65; embedded mounting.



TECHNICAL FEATURES

Series	SIDAC-121-110D-6COM
CPU	Intel ATOM D525 1.8GHz Dual Core
Chipset	Intel ICH8M
Video	INTEL GRAPHICS
RAM	DDR3 667/800/1333MHZ 2G Max 4GB
Storage	32GB Hard disk other storage capacity is optional, SSD optional
LAN	10/100/1000 M bits
Audio	Built-in Realtek662 HDA
Extendable Ports	2xfull-mini PCI express; 3 RS232
Ports	6xCOM (3XRS485/422/232,3XRS232), 4xUSB 2xLAN , 1xAudio Jacks, 1xVGA
LCD	12.1" Diagonal color
Aspect ratio	4:3
Resolution	1024x768
Dots	3072(H) x (RGB) x 768(V) = 2,235,296 (dots) (optional)
Brightness	350nits LED Backlight 800nits / LED Highlight Backlight (optional)
Contrast ratio	450:1
Viewing angle	50/60(U/D), 70/70(L/R)

DESCRIPTION

WiFi: These Panel PC series have Built-in WIFI, with high sensitive antenna.

Mounting: Several mounting methods to fit widely usage. Standard VESA 100X100mm. Available in a variety of mounting options including panel mount, VESA mount, rack mount, console mount and desktop. Rugged construction with light weight made these PCs suitable for many standard brackets.

Storage: Hard disk, SSD 32GB.

OS: Microsoft windows XP, Vista, windows 7 , windows8, and Linux etc.

DESCRIPTION

The SIDAC -121-110D-6COM Industrial panel PC series is ideal for industrial control. This industrial panel is a powerful and compact system offering current technologies, with innovative system integration features, that are demanded for today's applications. With 1.8GHz dual core CPU , the series is ideally suited for the applications of high definition video.

Heat Emission: This PC has rugged shell made of aluminum and steel, with high performance Fan less, providing better heat emission ability. Low CPU and chipset consumptive made the PC reliable and high speed even though they have smaller dimensions.

Dust and Water Resistance: Unique aluminum alloy front shell makes these PC more reliable. They can effectively resist dust and water. According with the IP65 standard.

Touch Screen: Several kinds of touch screen are available. We provide industrial 5-wire resistive touch screen and also Surface Acoustic Wave touch screen.